

Learn to Live

Term 4, Week 2 (15th October, 2021)

Important Dates:

Please mark these dates on your calendar

Please note: All upcoming events are currently postponed in line with current Government COVID restrictions.

Term 4 – OCTOBER

Mon 18	Kindergarten and Year 1 return to face-to-face learning.
Mon 25	Year 2, 3, 4, 5 and 6 return to face-to-face learning.

Term 4 – DECEMBER

Tues 7	Year 6 Farewell
---------------	-----------------

Principal: Mrs C Frith

Relieving Principal: Mrs K Page

Assistant Principal Stage 1: Mrs N Bridges

Assistant Principal Stage 2: Mrs K Jansons

Rel Assistant Principal Stage 3: Mrs C Hawkins

E-News Updates

- Camp update
- Week 10
- Return to School Term 4
- Staffing Update Term 4
- Message from the Relieving Principal
- Covid update
- Remote library borrowing
- Paper copies pick up
- Important return to school update
- Wellbeing week webinars
- Virtual disco
- Communication from Helen Davis
- Return to school support
- Social story—returning to school
- Covid organisation update
- Year 6 graduation bear/ball intention to purchase



School Activities Update

Timetables and school activity schedules are currently being reviewed to ensure we abide by the guidelines around cohort groupings as set by the Department of Education and NSW Health.

More information will be coming relating to the timetabling of class and school activities



Please remember when emailing the school, to please reference your child's class.

Grose Road, Faulconbridge NSW 2776

PO Box 249, Springwood 2777 **Phone:** 4751 2208 **Fax:** 4751 3933

Website: <http://www.faulconbri-p.schools.nsw.edu.au/>

Email: http://faulconbri-p.school@det.nsw.edu.au

Access student portal: <http://portal.det.nsw.edu.au>

Relieving Principal's Report

Dear Parents and Caregivers,

Welcome back

Welcome to our first newsletter for Term 4. I would like to start off by thanking our entire community for making my first two weeks here at Faulconbridge as Relieving Principal, so positive. The staff have made my transition seamless and have been very welcoming. Meeting your children who have been onsite for the last two weeks has been a pleasure, and I have enjoyed being in the classrooms and seeing the learning they are engaged in. I look forward to meeting all of our students over the coming weeks as the staggered return to face-to-face learning begins. Thank you to the parents / carers who have been in contact and made me feel very welcome, it will be lovely to meet more of our community as we welcome our students back to school.

Yesterday we had our first Virtual Disco and it was a great success! It was great to see the students and teachers having fun and dancing off some energy!! If you happened to take any photos of your child/ren partaking in the Disco yesterday or during the learning from home period, it would be lovely to be able to share some of these. Please send them through to the school via email and I will include these in next fortnights Newsletter.

Return to face-to-face learning

As you would be aware the NSW Premier, in conjunction with NSW Health and the Department of Education, announced changes to the return to school plan. Information regarding the return to school plan for Faulconbridge was sent home to families on Monday 11th October via Enews. If you have any questions regarding this, please contact the front office on 4751 2208.

Monday 18th October: Kindergarten and Year 1 students return.

Monday 25th October – Year 2, Year 3, Year 4, Year 5 and Year 6 students return.

We are very mindful that for some of our students and families the transition back to school may come with mixed emotions. Please refer to the attachment 'Helpful tips for coming back to School' for some suggestions to make this transition a positive one. Please do not hesitate to contact the class teacher regarding specific concerns. Further, please note, our school bubblers will not be in use. Please ensure your child/ren has their own water bottle each day.

Planning for 2022

We will commence our planning for 2022 soon and would greatly appreciate receiving information regarding any special consideration relating to class placements for the 2022 school year. Should you have any information that you feel we need to take into consideration when organising classes for 2022, please inform me in writing by Friday 22nd October (next Friday). This can be done by sending an email to faulconbri-p.school@det.nsw.edu.au. **Please note, that whilst all concerns will be taken into consideration, I can not guarantee that all requests will be fulfilled.**

Also, if your child/ren are not returning to Faulconbridge in 2022, can you please send an email to faulconbri-p.school@det.nsw.edu.au informing the office staff, so we can do as much as possible to organise classes around anticipated enrolments.

Update on the shade shelter

Earlier in the week I met with a delegate from the Asset Management Unit of the Department to finalise the organisation for the installation of the shade shelter that was previously damaged due to severe weather. At this stage, I do not have an exact installation date, however, it should be in the coming weeks and I will keep you up to date as to when this will take place, as it may mean that we need to block off particular areas of the school to ensure the safety of everyone on site during installation.

Relieving Principal's Report cont.

Kindergarten enrolments and Kindergarten orientation 2022

We are taking enrolments for Kindergarten 2022. If you have a child who will be enrolling in Kindergarten for 2022, please assist us by completing an enrolment form. Details regarding enrolment, can be found on the school website.

At this stage, Kindergarten Orientation unfortunately cannot take place on site and therefore, information regarding 2022 Kindergarten transition is being communicated via Class Dojo. Please keep an eye on this, as information is being updated and communicated regularly.

Refunds for 2021 cancelled activities

Due to restrictions surrounding COVID, a number of school activities were postponed and later cancelled during Term 3. All monies paid for these activities will be reversed over the coming weeks and put into Fees in Advance. These funds will then be available to use for any future activities at FPS. If you are one of the families who paid for Winmalee Cup, Swim Scheme, Athletics Carnival or Stage 2 Camp, this will relate to your school account. If you have any further queries in relation to accounts, we ask that you forward an email to faulconbri-p.school@det.nsw.edu.au

CUB AWARDS

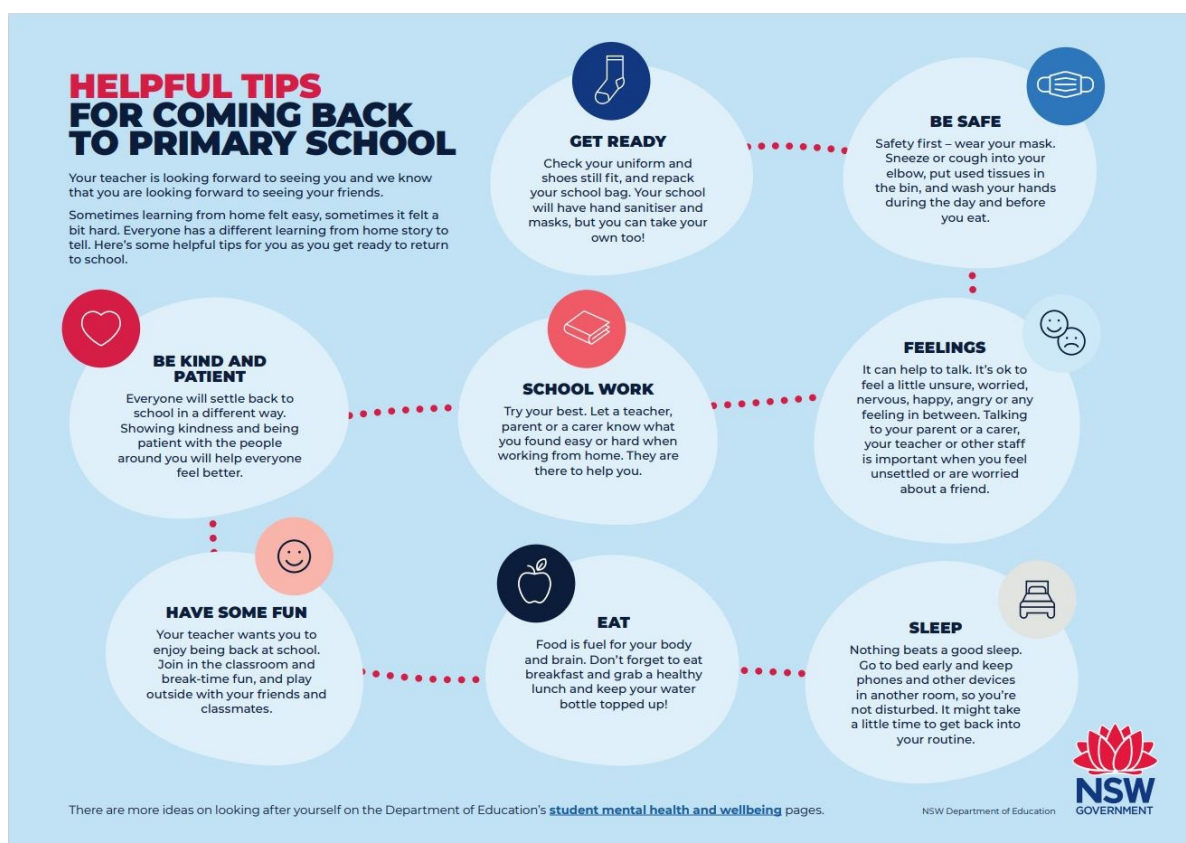
Congratulations to our Cub Award winners for 2021:

Term 4	Stella B (ES1)	Lucy R (S2)
Week 1	Henry W (S1)	Roven R (S3)

Term 4	Sophie W (ES1)	RW (S2)
Week 2	Eric D (S1)	Oscar T (S3)

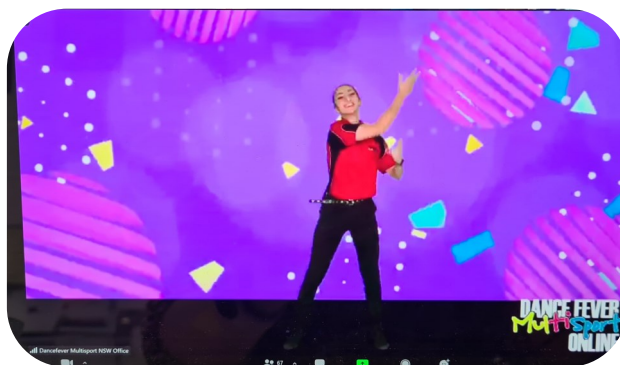
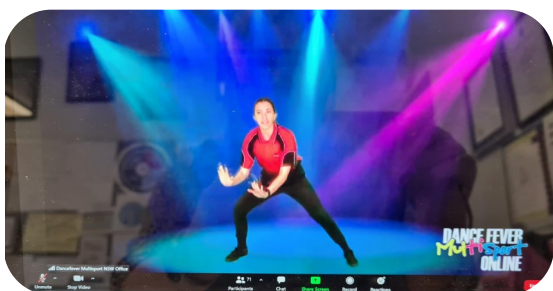
Karina Page

Relieving Principal





Disco Fun!!





School Travel for 2022

2022 school travel applications are now open

Students who need a School Opal card or travel pass for 2022 can apply now. A new application will need to be submitted if they are applying for a school travel pass for the first time, or if they are requesting an additional travel entitlement as a result of a new shared parental responsibility situation (e.g. joint custody).

Students who change address, school, campus location, or who have repeated a year or received an expiry notification from Transport for NSW for their school travel entitlement should renew or update their details before the end of term 4. This will ensure that schools can endorse applications and current entitlements are updated and remain valid. School Opal card holders will have the changes applied to their existing card.

If a student's distance eligibility has changed based on their grade the system will automatically update their entitlement if they meet the new criteria. If they do not meet the new eligibility criteria, they will receive an expiry notification via email.

Students who have an entitlement approved under a medical condition that is due to expire will receive a notification advising them to re-apply. Term Bus Pass holders will receive a notification to re-apply.

Students in the Opal network applying for an Opal card (including a Term Bus Pass) for the first time will receive their Student Opal card at their nominated postal address. Cards will be mailed out from January 2022.

Students living in rural and regional (R&R) areas should receive their travel pass at the start of the new school year from their nominated transport operator. It may come via the school or be sent directly to them at home. Note: some R&R operators do not issue travel passes. Students/parents should confirm with their nominated operator if they do not receive a pass.

School Student Transport Scheme site change

On 1 October 2021 the School Student Transport Scheme (SSTS) information and application portal was moved to transportnsw.info. This will assist families to find all their travel information in the one place.

Travel from Term 1 2022

We ask that parents plan ahead and make sure their child knows which service/s to use and has a valid ticket to travel; either a School Opal card or Child/Youth Opal card (within Greater Sydney) or a School Travel Pass (outside Greater Sydney), from the start of the school year .

More information can be found at: <https://transportnsw.info/school-travel-apply>

Sunsmart Snippet

How does sunscreen work?

When we protect our skin by applying sunscreen correctly, we reduce our risk of skin cancer.



Sunscreen reduces the amount of UV radiation reaching your skin by providing a barrier to absorb or filter UV rays away from you skin. This prevents damage to the cells below.

When UV levels are 3 or above, sunscreen should always be used with other forms of sun protections such as clothing, hats and shade.

www.sunsmartnsw.com.au



Cancer Council
Healthy Lunch Box



SWOT

SPRINGWOOD WORLD OF TENNIS

Andrew McLeod

Accredited Club Professional NSW TCA
Coach

Previously coached in USA and Germany
Qualified PDHPE Teacher

GROUP & PRIVATE LESSONS

ALL AGES - beginners to elite players

SCHOOL HOLIDAY COACHING CLINICS

PRO SHOP, RACQUET SALES & RESTRINGING

Phone: 4751 5383

Mobile: 0416 083 472

Email: springwoodworldoftennis@hotmail.com

SPRING ST, SPRINGWOOD

BRINGING UP GREAT KIDS

Reconnect with your kids after a difficult year

Bringing Up Great Kids is a reflective, mindful, respectful program that provides parents with an opportunity to reflect on their parenting journey.

Bringing Up Great Kids provides a friendly and safe environment for parents to learn from each other as they continue their parenting journey.

THE PROGRAM

- learn more about the origins of their own parenting style and how it can be more effective;
- learn more about brain development in children and its influence on their thoughts, feelings and behaviour;
- understand the meaning behind children's behaviours, and how to respond to children's underlying feelings and needs;

WHEN & WHERE

Join us every Tuesday from 19th Oct - 9 Nov on Zoom
10.00 - 12.00PM

email hannah@thriveservices.org.au to book your spot!



Gateway Family Services

Term 4, 2021

Parenting Programs Summary



Program	Date & Time	Location	Registration
Tuning In To Kids <i>Emotionally Intelligent Parenting</i> <i>Learning to better talk & understand your child to help manage your child's emotions & behaviour.</i> <i>Suitable for parents of 2-8 years old.</i>	Every Monday 11th Oct - 8th Nov 9:30am - 11:30am <i>* NO Childcare available</i>	ONLINE via ZOOM	Ph: 0490 662 498 OR Email groups@gatewayfamily-services.org.au
Circle of Security <i>Learn how to be a strong, wiser & kinder parent with your kids. Suitable for parents of 0-12 year old.</i>	Every Tuesday 12th Oct - 30th Nov 7:30pm - 9:00pm <i>* NO Childcare available</i>	ONLINE via ZOOM	Ph: 0490 662 498 OR Email groups@gatewayfamily-services.org.au
1-2-3 Magic & Emotion Coaching <i>Learn how to understand & manage your child's difficult behaviour.</i> <i>Suitable for parents with 2-12 year olds.</i>	Every Thursday 28th Oct - 11th Nov 10:00am - 12noon <i>* NO Childcare available</i>	ONLINE via ZOOM	Ph: 0490 662 498 OR Email groups@gatewayfamily-services.org.au
Circle of Security <i>Learn how to be a strong, wiser & kinder parent with your kids. Suitable for parents of 0-12 year old.</i>	Every Thursday 14th Oct - 2nd Dec 7:30pm - 9:00pm <i>* NO Childcare available</i>	ONLINE via ZOOM	Ph: 0490 662 498 OR Email groups@gatewayfamily-services.org.au

For more information and Individual Flyers go to:

www.gatewayfamily-services.org.au or www.facebook.com/GatewayFS

Gateway Family Services parenting programs are funded by DSS and DCJ.

Gateway works collaboratively with community partners to bring parent groups to communities from St Marys to Blackheath.

Gateway encourages, supports & respects diversity in families & communities. Our Groups are open to everyone.

