

## Learn to Live

Term 1, Week 6 (5th March, 2021)

### Important Dates:

Please mark these dates on your calendar

Term 1 – MARCH	
<b>Tues 9</b>	Promoting resilience parent workshop 7pm—8pm
<b>Wed 10</b>	School photos
<b>Mon 15</b>	P&C Meeting 7pm
<b>Tues 16</b>	Harmony day
<b>Wed 17</b>	Paul Kelly Cup
<b>Fri 19</b>	Bucket Filling Day
<b>Thur 25</b>	Practice NAPLAN (Yrs 3 & 5)

### Term 2 – APRIL

<b>Mon 19</b>	Staff development day
<b>Tues 20</b>	Students return for term 2

### Term 2 – MAY

<b>Mon 3 to Fri 7</b>	Milson Island camp (stage 3)
-----------------------	------------------------------

**Principal:** Mrs C Frith

**Assistant Principal Stage 1:** Mrs N Bridges

**Assistant Principal Stage 2:** Mrs K Jansons

**Rel Assistant Principal Stage 3:** Mrs C Hawkins

### Notes Home/ ENews Updates

- School Photo Day
- AFL Paul Kelly Cup
- John May Drumming
- Morning yoga is starting!
- Stage 3 dance group
- Parent workshop: helping your kids to bounce back
- SRC badge ceremony

### Assembly Dates

Friday's commencing 2pm

#### Term 1

5th March	5-6
12th March	K-2 SRC Badges
19th March	3-4 SRC Badges
26th March	5-6

### School Activities Update



**Garden Classes - Term 1**  
Stage 3 - 5/6H, 5/6P, 5/6S

**Sport Days - Fridays**  
K-2 (9.55 - 10.55)  
3-4 (12.25 - 1.25)  
5-6 (1.55 - 2.55)



**PE Days (sports uniform)**  
Tuesday: 2/3P, 3/4T, 3/4Z, 3/4C  
Wednesday: 1/2F, 1/2W, 5/6P, 5/6H, 5/6S  
Thursday: 1/2H, KB, KG, K/1C



**Library Days**  
Tuesday: 5/6S, 5/6H, 5/6P  
Wednesday: 1/2W, 3/4C, 3/4Z, 2/3P  
Thursday: K/1C, KG,  
Friday: 1/2F, KB, 1/2H  
3/4T: Thursday (odd weeks), Friday (even weeks)

#### Music

Monday:  
Tuesday: K/1C, KB, KG, 1/2W, 1/2H  
Wednesday: 5/6S, 5/6H, 5/6P, 3/4T  
Friday: 2/3P, 3/4C, 3/4Z, 1/2F



Grose Road, Faulconbridge NSW 2776

PO Box 249, Springwood 2777 **Phone:** 4751 2208 **Fax:** 4751 3933

**Website:** <http://www.faulconbri-p.schools.nsw.edu.au/>

**Email:** [http://faulconbri-p.school@det.nsw.edu.au](mailto:faulconbri-p.school@det.nsw.edu.au)

**Access student portal:** <http://portal.det.nsw.edu.au>



## Principal's Report

Dear Parents and Caregivers,

### SETTLING INTO THE NEW SCHOOL YEAR

The beginning of each school year always brings settling issues for some students. We work hard to create a school community that is safe, respectful and supports successful learning. Often, we need to give students time to settle into routines and to get used to changes, both expected (eg. a new teacher) and unexpected (eg. not getting the teacher/class placement they wanted). Children of all ages can be incredibly resilient if we give them time to settle and we work together to support them. We try to resolve issues as quickly as we can, so that our students can learn in an inclusive environment where families and teachers work together to achieve the best outcomes.

If you have a compliment or a concern about any aspect of our school, please contact us. Teachers always appreciate positive feedback – just like anyone else who is working hard at their job. Our teachers ensure that every student is known, valued and cared for, and they are extremely conscientious in their work. Please let us know if you think we're doing something well. We value your feedback and are committed to dealing with concerns thoroughly and fairly.

Most concerns can be resolved by talking about them, so start by contacting your child's teacher in the first instance. You can raise your issue directly in person by making an appointment, or by email, telephone or by letter if you prefer. Make a time to meet with the teacher or phone the school and ask for an appointment. Please be aware that teachers cannot respond to Class Dojo messages during school hours. Emails can usually be responded to within 48 hours. It helps us to resolve issues if you are able to provide clear information and communicate in a positive and constructive manner.

When responding to a concern, we may do one or more of the following:

- provide an explanation for a particular decision;
- take action to improve the situation;
- acknowledge that the situation could have been handled differently;
- undertake to review the school policies or procedures in light of the issue raised; and
- if necessary, apologise.

These actions do not mean parents and students will get what they may be seeking in raising a concern. Sometimes parents have unrealistic expectations about what can be done at school. We will follow our processes, procedures and Department of Education policies to reach a reasonable outcome. Often, we may not be able to change what has happened or the original decision was actually the appropriate decision in the circumstances. Whatever the outcome, you will receive clear reasons for our decisions. Teachers use their professional judgement in making decisions regarding students and take great care to promote academic progress and wellbeing.

### RESILIENCE WORKSHOP FOR PARENTS

Following from the topic above, it is timely that we are providing parents with an opportunity to attend a resilience workshop next Tuesday night at 7pm in the school hall:

#### What is Resilience?

“When things go wrong, being resilient is like a person who has a bungee rope around them to bounce back when things get tough and to maintain their idea of who they are.”

Professor Andrew Fuller



## Principal's Report cont'd

### So how do we help our kids to build resilience and bounce back?

Come along to our parent workshop on Tuesday, 9<sup>th</sup> March to find out.

7-8pm in the library.

To register please sign up here: <https://forms.gle/HGFVHaCfZVar9vjYA>

### HELPING WITH HOMEWORK

Many parents are asking for ideas of how to help their children with homework, and practicing skills such as reading, spelling and number facts. To support parents, we will be running a home learning parent workshop on Wednesday 17<sup>th</sup> March at 6pm for K-2 parents. Please check Enews for further details soon.

### STAFF CARPARK

In the interests of keeping students safe, we are asking that parents/carers and volunteers use the main pedestrian gate and avoid using the staff carpark as an entry point or drop off zone. There are times during the school day when staff may need to leave or return from meetings. It would be appreciated if all members of the community refrained from using the staff carpark. We are continuing to keep the gate from the carpark to the school grounds locked to deter the carpark being used as a thoroughfare. We ask that only DET employees use the carpark.

### SCHOOL PHOTOS

School photos will be taken next Wednesday 10<sup>th</sup> March. Please ensure students are in full summer uniform.

### COVID RESTRICTIONS UPDATE

Updated details were released to Principals late on Thursday night. I will be providing an update to parents on Monday via Enews.

### CUB AWARD MORNING TEA

Congratulations to our Cub Award winners for 2021.

	K-2	3-6
<b>Term 1</b>		
<b>Week 5</b>	Lochie C 1/2F	Aryelle T 5/6S
	Harriet W KB	Aurelia J 3/4Z
	Liam H K/1C	Max B 5/6H

	K-2	3-6
<b>Term 1</b>		
<b>Week 6</b>	Archie M 1/2H	Myriam S 3/4C
	Tom 1/2F	Elka L 5/6P
	Olivia H KB	Alex M 3/4T

Mrs Carol Frith  
Principal

# 10 Questions with Mr Cleary

By Sarah Yearsley and Sophie Young

1. **How long have you been teaching?** Six years.
2. **How long have you been teaching at Faulconbridge?** Four years.
3. **How do you think you can improve Faulconbridge Public School?** By setting a good example to my class and hope they set this example to the rest of the school.
4. **How do you think children learn best?** Children learn best when they have a good daily routine so they feel comfortable and understand what is expected each day.
5. **What stage do you teach?** Stage 2
6. **What's your favourite sport?** Soccer
7. **What's your favourite band?** Moderat
8. **What's your favourite subject?** Mathematics
9. **What's your favourite part about the school?** The students, they make the school a great place to be.
10. **What's your favourite TV Programme?** How I met your mother and South Park.



## PROMOTING RESILIENCE - PARENT WORKSHOP

Dear Parents/Caregivers,

On Tuesday 9<sup>th</sup> March, we will be offering a parent information night from 7pm to 8pm. Tim Powell from Values for Life incursions has been invited to come and present practical and effective ways how we as parents/caregivers can help our young people be resilient. (<https://www.valuesforlife.net/>)

Tim has a background as an educator and counsellor and will share factors that help young people bounce back when it comes to issues such as bullying, failure, catastrophising, anxiety and other pressures. All parents, caregivers, teachers and other interested parties are welcome to come along for a relaxed and informative night!

**What:** Helping Your Kids to Bounce Back Workshop

**When:** Tuesday 9<sup>th</sup> March

**Where:** Faulconbridge Public School

If you will be attending this seminar, please fill out the corresponding google docs RSVP form.

<https://forms.gle/HGFVHaCfZVar9vjYA>

We hope to see you there!

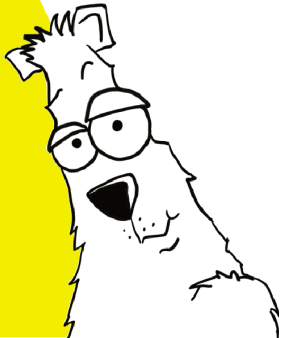
*Faulconbridge Public School Communities Team*

# Faulconbridge Public School

# PBL Award

TERM 1

WEEK 5 & 6



Years 3 - 6

Presented to:

Class	Name	Class	Name
3/4C	Ted R	3/4T	Sophia O
3/4C	Leyton A	5/6H	Oliver L
3/4C	David S	5/6H	Ellaria S
3/4C	Dom W	5/6H	Tilly W
3/4Z	Neave F	5/6P	Seamus O
3/4Z	Nicholas W	5/6P	Rafferty C
3/4Z	Sienna K	5/6P	Elka L
3/4Z	Elvis A	5/6S	Aryelle T
3/4T	James A	5/6S	Sarah M
3/4T	Banjo H	5/6S	Thomas D
3/4T	Kieran O		



**CONGRATULATIONS** to our swimming age champions for 2021

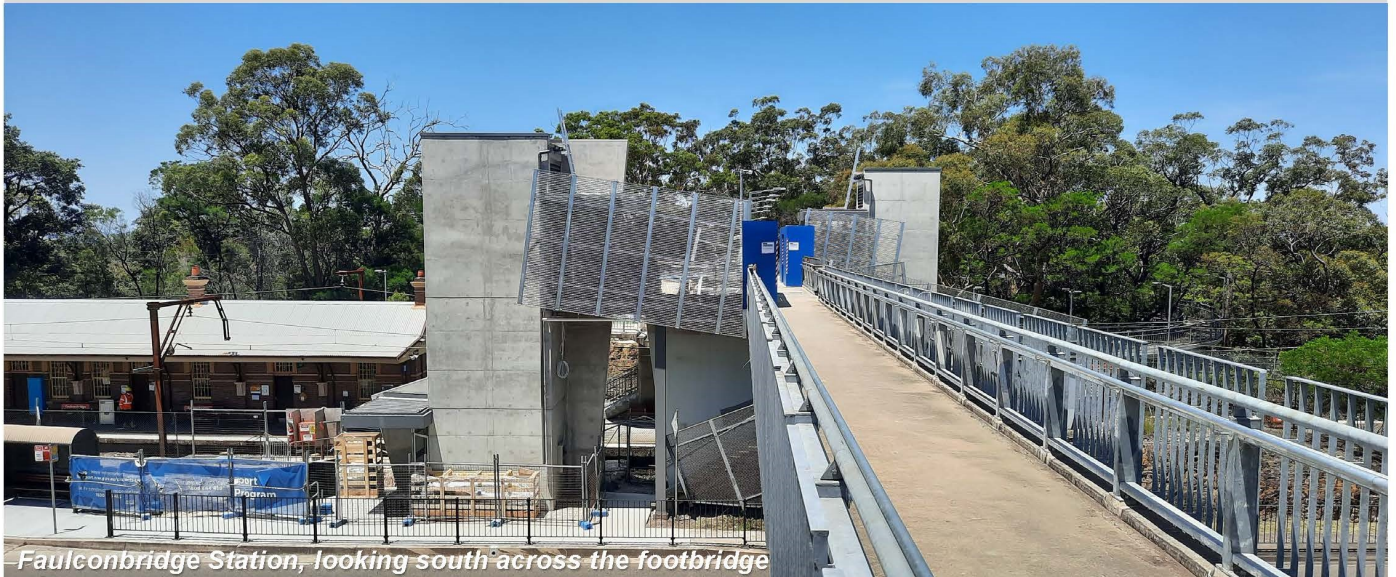
Junior	Annabelle W	Harry S
11s	Rose N	Jackson S
Seniors	Teagan W	Ethan T

# Transport Access Program

## Faulconbridge Station Upgrade

Project update

March 2021



### Upcoming work in March

The upgrade to Faulconbridge Station is progressing well. Construction activities in March will include:

- upgrading the ramp between the footbridge and Railway Avenue commuter car park
- upgrading of the accessible parking spaces and kiss and ride zone
- installing lift components and connection of lift services
- landscaping and platform resurfacing
- installing stair edge nosings
- installing platform tactiles
- removal of temporary site compounds.

Equipment to be used during this work will include excavators, compactors, mobile cranes, elevated work platforms, delivery/concrete trucks, power and hand held tools.

### Temporary closure of single parking spaces – commuter car park

During March there will be **intermittent single car space closures** within the commuter car park as new light posts are installed. A single car space will be closed for up to 24 hours at a time using temporary bollards. Signage will be in place to assist customers with this change.

For more information call **1800 684 490**,

Email [projects@transport.nsw.gov.au](mailto:projects@transport.nsw.gov.au) or visit [transport.nsw.gov.au/faulconbridge](https://transport.nsw.gov.au/faulconbridge)

For urgent enquiries or complaints regarding construction activities, please call 24 hours **1800 775 465**

## Temporary traffic changes – Great Western Highway

During March there will be **intermittent single lane road closures** on **Great Western Highway (westbound)** near Falconbridge Station. The intermittent closures will take place between **Monday and Friday** from **10am to 2pm** to accommodate large construction vehicles. Traffic control and signage will be in place to help pedestrians and motorists with the traffic changes.

## Temporary access changes – between footbridge and commuter car park

Work continues in March to upgrade the ramp between the footbridge and Railway Avenue commuter car park. This includes construction of the new concrete footpath/ramp and installation of lighting to the ramp and carpark. Pedestrian and vehicle access will be maintained at all times.

## Standard construction hours

**Our construction hours are now 7am to 6pm every day, including public holidays.**

We understand extending construction hours to weekends and public holidays may cause disruption for the community and all efforts will be made to minimise impacts where possible and ensure strict environmental conditions relating to noise, vibration and dust management are adhered to.

## Keep in touch

If you would like to be added to the project distribution email list, or for more information on Falconbridge Station Upgrade please contact us on **1800 684 490** or email [projects@transport.nsw.gov.au](mailto:projects@transport.nsw.gov.au).

For all urgent enquiries or complaints regarding construction activities, please call our 24-hour Construction Response Line on **1800 775 465**.

Thank you for your patience and support during this important work.



This document contains important information about public transport projects in your area. If you require the services of an interpreter, please contact the Translating and Interpreting Service on **131 450** and ask them to call Transport for NSW on **1800 684 490**. The interpreter will then assist you with translation.

### Italian

Il presente documento contiene importanti informazioni sulle iniziative nel campo del trasporto pubblico nella vostra zona. Se desiderate i servizi di un interprete, contattate il Servizio traduzioni e interpreti al numero 131 450 indicando di voler parlare con Transport for NSW al numero 1800 684 490. L'interprete vi aiuterà a condurre la conversazione telefonica

### Spanish

El presente documento contiene información importante sobre proyectos de transporte público en su área. Si requiere los servicios de un intérprete, llame al Translating and Interpreting Service al 131 450 y pídale que llamen a Transport for NSW, teléfono: 1800 684 490. Luego el intérprete le ayudará con la traducción.

### Greek

Το παρόν έγγραφο περιέχει σημαντικές πληροφορίες σχετικά με δημόσια έργα μεταφορών στην περιοχή σας. Αν χρειάζεστε τις υπηρεσίες διερμηνέα, παρακαλούμε επικοινωνήστε με την Υπηρεσία Μεταφράσεων και Διερμηνείας στο 131 450 και ζητήστε τους τηλεφωνήσουν στις Συγκοινωνίες στη ΝΝΟ στο 1800 684 490. Ο διερμηνέας θα σας βοηθήσει στη συνέχεια με τη μετάφραση.

### German

Dieses Dokument enthält wichtige Informationen über die Planung der öffentlichen Verkehrsmittel in ihrer Umgebung. Falls Sie einen Dolmetscher benötigen, wenden Sie sich bitte an die Dienststelle für Übersetzer und Dolmetscher unter der Nummer 131 450 und bitten diese Transport for NSW unter der Nummer 1800 684 490 anzurufen. Ein Dolmetscher wird Ihnen dann mit dem Übersetzen des Texts helfen.

For more information call **1800 684 490**,

Email [projects@transport.nsw.gov.au](mailto:projects@transport.nsw.gov.au) or visit [transport.nsw.gov.au/falconbridge](http://transport.nsw.gov.au/falconbridge)

For urgent enquiries or complaints regarding construction activities, please call 24 hours **1800 775 465**

**STARTING  
MARCH  
3rd**

IT'S BACK FOR 2021

# MATH CLUB DROP IN

FREE MATHS TUTORIAL FOR HIGH SCHOOL STUDENTS FACILITATED BY A RETIRED TAFE MATHS TEACHER.  
IAN CAN SUPPORT THE FULL SPECTRUM FROM YEARS 7-12.  
BRING ALONG ANY WORK YOU ARE HAVING DIFFICULTY WITH.

**EVERY WEDNESDAY  
DURING SCHOOL TERM  
3PM-4:30PM  
HELD IN THE CENTRE**

FOR MORE INFORMATION PLEASE CONTACT IMELDA AT THE CENTRE.

Striving for a community that is vibrant, caring and inclusive

Springwood Neighbourhood Centre  
www.sncc.org.au  
reception@sncc.org.au  
02 4751 3033  
facebook.com/springwoodneighbourhoodcentre



# SWOT

SPRINGWOOD WORLD OF TENNIS

**Andrew McLeod**

Accredited Club Professional NSW TCA Coach

Previously coached in USA and Germany  
Qualified PDHPE Teacher

**GROUP & PRIVATE LESSONS**

**ALL AGES - beginners to elite players**

**SCHOOL HOLIDAY COACHING CLINICS**

**PRO SHOP, RACQUET SALES & RESTRINGING**

Phone: 4751 5383

Mobile: 0416 083 472

Email: [springwoodworldoftennis@hotmail.com](mailto:springwoodworldoftennis@hotmail.com)

SPRING ST, SPRINGWOOD

PO BOX 473, SPRINGWOOD NSW 2777

## Nutrition Snippet

CHOP UP FRUIT AND VEG.



**Kids are more likely to eat fruit and veg if they are chopped and ready to eat!**

Check out other top tips on how to encourage your kids to eat more fruit and veg at:  
[healthylunchbox.com](http://healthylunchbox.com)

[healthylunchbox.com.au](http://healthylunchbox.com.au)



**Cancer Council**  
Healthy Lunch Box

Come play AFL with



**FREE registration!**

\*using active kids voucher  
\*Paul Kelly Cup



**JOIN US**

All ages :

- Auskick 5yrs+
- Boys Teams 11s , 12s  
Under 11s Boys & Under 12s Boys are encourage to sign up
- Girls 10s, 12s, will only play in girl competition
- Boys Teams 9-17

Training is at Tom Hunter Park, Faulconbridge

Register now



\* Club will pay the gap when using active kids voucher.  
Free registration is only for juniors. Existing players will get a merchandise pack for free.  
\*All Paul Kelly Cup player will be 100% free of registration, uniform and all fees.

@bmkaf

Contact email: [president.bmkaf@gmail.com](mailto:president.bmkaf@gmail.com)  
For info please call Danny : 0447 695 006





## **Schools Reconciliation Challenge 2019 Travelling Exhibition**

**On show at the Everglades Gallery – Everglades House &  
Gardens, 37 Everglades Ave, Leura**

See the prize-winning work of students from four local schools exploring  
the theme *Speaking and Listening from the Heart*  
plus work from talented students across New South Wales.

**Exhibition opening (by invitation):** 2pm – 4pm, Friday 5 March

**Exhibition on show:** Saturday 6 March to Monday 29 March 2021.

Everglades House & Garden is open Thursday to Monday, 10am - 3.30pm  
(entry is part of garden ticket)




Reconciliation  
NSW



Organised in partnership with the National Trust, Reconciliation NSW & BM People for Reconciliation  
Contact Lyn for more information: (02) 4759 2078 or Guy: (02) 4784 1938

# 2021 TERM 1 CALENDAR OF EVENTS as at 5/3/21



Week/Month	Monday	Tuesday	Wednesday	Thursday	Friday
6 Mar	1 Volunteer Induction 6pm in the Library IEP Meetings day 1	2 Yoga (K-2) 8-8:50am Wind Orchestra 7:45am	3	4 Yoga (3-6) 8-8:50am Note Due: AFL Paul Kelly Cup	5 Stage 3 Assembly Stage 3 debating teams announced & meetings begin
7 Mar <b>Wellbeing Week</b>	8 IEP meetings day 2 Drumming (3-6) 8am	9 Values for Life - Evening Parent Seminar 7-8pm in the hall Yoga (K-2) 8-8:50am Wind Orchestra 7:45am	10 School photos ( <i>bring your photo envelope in today</i> ) IEP meetings day 3 Note Due: Child Protection	11 Yoga (3-6) 8-8:50am	12 K-2 Assembly - <b>SRC badges</b> Uniform Shop 8:20 - 9:20am 2 <sup>nd</sup> Instalment Due - <b>Milson Island Camp</b>
8 Mar <b>Harmony Week</b>	15 P&C Meeting 7pm in the Library Drumming (3-6) 8am	16 Harmony Day ( <i>students wear orange</i> ) Yoga (K-2) 8-8:50am Wind Orchestra 7:45am	17 K-2 Homework Presentation 6pm AFL Paul Kelly Cup	18 National Close the Gap Day Yoga (3-6) 8-8:50am Note Due: General Permission to Publish	19  Bucket Filling Day Stage 2 Assembly - <b>SRC badges</b> Uniform Shop 8:20 - 9:20am Concert Band 7:45am
9 Mar	22 Drumming (3-6) 8am	23 Yoga (K-2) 8-8:50am Wind Orchestra 7:45am	24 Note Due: Internet Acceptable Use Policy	25 Practice NAPLAN - Yrs 3 & 5 (bring headphones) Yoga (3-6) 8-8:50am	26 Stage 3 Assembly 3 <sup>rd</sup> Instalment Due - <b>Milson Island Camp</b> Concert Band 7:45am
10 Apr	29 Drumming 8am (Stage 2&3)	30 Yoga (K-2) 8-8:50am Wind Orchestra 7:45am	31	1	2 GOOD FRIDAY

\*\* Please continue to use the QR Code and follow social distancing guidelines by keeping 1.5m from other adults when visiting the school site \*\*