

Learn to Live

Term 1, Week 9 (25th March, 2022)

Important Dates:

Please mark these dates on your calendar

Term 1 –March

Thur 31 'Meet the teacher' afternoon
3:15 - 4:15pm outside each
classroom

AFL After School Clinic

Term 1 –April

Friday 1 K-6 Assembly @2pm

Thur 7 AFL After School Clinic

Friday 8 Easter Hat Parade from 1.45pm
Easter Raffle Drawn
Last day of term

Term 2 – April

Wed 27 ANZAC Day Assembly

Thur 28 AFL After School Clinic

Term 2 – May

Tues 3 Paul Kelly Cup

Relieving Principal: Mr Chris Pyne

Rel Assistant Principal Stage 1: Mrs Katie Barrow

Assistant Principal Stage 2: Mrs Serena Goodridge

Rel Assistant Principal Stage 3: Miss Katrina Iredale

E-News Updates/ Notes Home

- Tree removal over the weekend
- Risk of COVID-19 (All stages)
- Meet the teacher afternoon
- Volunteer Induction
- Easter Raffle Ticket Booklets
- Easter Hat Parade



School Activities Update

Library Days

Monday: 5/6C, 5/6H, 5/6L

Tuesday: 1/2B, 1/2L, 1/2H, 3/4G, 3/4Z

Thursday: 3/4P, 2/3P

Friday: KK, KG, K/1L



When emailing the school please
reference your child's class.

Grose Road, Faulconbridge NSW 2776

PO Box 249, Springwood 2777 **Phone:** 4751 2208 **Fax:** 4751 3933

Website: <http://www.faulconbri-p.schools.nsw.edu.au/>

Email: <http://faulconbri-p.school@det.nsw.edu.au>

Access student portal: <http://portal.det.nsw.edu.au>

Relieving Principal's Report

Hello Faulconbridge Families,

As the term slowly starts to wrap up the learning up until the last afternoon Term 1 doesn't stop. We have heaps to get through and our teachers and students have been working hard inside and outside the classroom.

Well done to all our swimmers for a great effort in, not only our swimming carnival, but the students who competed at the Zone and Regional swimming carnival. You did us all proud and competed fiercely.

It's been great to see so many parents attending our K-2 and 3-6 assemblies to celebrate the achievements of our students. The pride that is shown on their faces as they get an award is priceless.

Take care of each other and I'll see you in week 9.

Warm regards,

Chris Pyne
Rel. Principal



**Easter raffle
donations**

We will be holding an Easter raffle as part of our Easter hat parade. If you are able to donate, please place your donation in the box at the front office.

Thank you in advance for your support of this fundraiser.

Mrs Barrow and Mrs Goodridge.

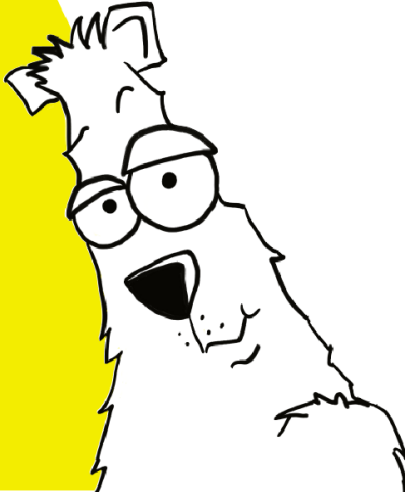
Faulconbridge Public School

PBL Award

Presented to:

TERM 1

WEEK 8



Early Stage 1 and Stage 1

KG	I. A	Working hard during maths.
KG	Scarlett D	Trying her hardest during phonics lessons.
KG	William S	Always trying his best in all lessons.
KG	Casey G	A fantastic effort during all lessons.
KK	Peyton S	Outstanding effort in phonics.
KK	Adi M	Excellent achievement in Maths.
KK	Olive V	Persistent effort in all learning areas.
KK	D. A	Consistent efforts in all lessons.
K/1L	Isla A	Fantastic blending when reading.
K/1L	Taavi B	Fantastic blending when reading.
K/1L	Eira N	Trying hard to write neatly.
K/1L	Sebastian R	Great work in 'Get Reading Right'.
1/2B	Freyja T	Being an engaged learner.
1/2B	Aurora L	Her excellent attitude and effort in class.
1/2B	Liam H	Striving to do his best at all times.
1/2B	Thomas C	Displaying respect in all settings.
1/2H	Reuben K	Being a curious and engaged learner! Welcome to our school!
1/2H	Willis J	Being a learner by 'cracking the code' - blending to read words!
1/2H	Zahli A	Being an engaged and enthusiastic learner!
1/2H	Harrison B	Always striving to achieve his best learning!
1/2L	Archie M	Being an enthusiastic learner with creative ideas.
1/2L	Violet M	Consistently trying hard in every key learning area.
1/2L	Ruby V	Being a conscientious learner and always willing to help in anyway she can.
1/2L	Harry P	Always listening to his teacher and trying his best.

Faulconbridge Public School

PBL Award

Presented to:

TERM 1

WEEK 9



Stage 2

2/3P	Ivy M	Being a conscientious and helpful member of 2/3P.
2/3P	Oscar H	Always joining in with discussions and presenting his ideas clearly.
2/3P	April E	Being an imaginative and creative member of 2/3P.
2/3P	Fionn C	Demonstrating his ability to grow in confidence in his daily tasks.
3/4G	Vanua W	Fantastic responses in reading groups.
3/4G	Cove D	Working hard when solving problems in Maths.
3/4G	Kalee B	Being a caring respectful member of 3/4G.
3/4G	Raffeti H	Being a fair, respectful member of a group during reading.
3/4P	Elvis A	Being a learner when problem solving in Mathematics by using multiple strategies!
3/4P	Ethan V	Being respectful in the classroom and displaying improved application in all areas of school.
3/4P	Phoebe G	Being a learner by collaborating effectively with her peers during group work activities!
3/4P	Ana K	Being a learner by applying herself to all set tasks with increasing confidence!
3/4Z	Hunter C	His enthusiasm and effort in Maths.
3/4Z	Emrys N	Excellent work in writing.
3/4Z	Brady W	Excellent work in reading.
3/4Z	Kiraleigh B	Always trying her best in all activities.



EASTER HAT PARADE

We would like to invite you to share in the fun of our
Easter Hat Parade!



Date: Friday, 8th April, 2022
Location: Big Top and hall
Time: 1:45pm



Kindergarten, Yr1, and Yr2 will be making Easter headbands at school to parade, however, if you would like to make an Easter hat at home with your child, they are welcome to wear it on the day instead.

Primary classes (Yr3-Yr6) will be creating an Easter artwork to display in the hall. Children in these classes won't be making hats during class time, however, if your child would like to take part in the parade, they are welcome to create an Easter hat at home.

The Easter Raffle will be drawn on the day so make sure you buy your tickets for a chance to win!

Tickets can be purchased from Mrs Barrow or Mrs Goodridge at lunchtime—\$1 each or 3 for \$2

Students may wear mufti on the day.

*We look forward to a great afternoon
celebrating Easter together!*

The Staff and Students of Faulconbridge Public School



Year 6 Easter Fundraiser

MUFTI DAY

Gold Coin Donation - Friday 8th April



EASTER EGG BASKET RAFFLE

Donate a chocolate easter egg per family to the office by Wednesday April 6th.

Raffle ticket booklets will be distributed today.

\$1 per ticket

Drawn on Friday 8th April

EASTER EGG GUESSING COMPETITION

Friday April 1st and April 8th

Guess how many eggs in the jar (at the Blackboard Café)

50c per guess

Winner announced Friday 8th April

*Thank you for your support!
From the Year 6 Fundraising Committee*

***** Any year 6 parents who would like to join the fundraising committee,
please call Lauren on 0450 699 693 *****





P&C NEWSLETTER | TERM 1, WEEK 9

P&C ASSOCIATION



School Sustainability

Over the last fortnight, our Green Team have continued work on improving recycling in the classrooms and school wide to ensure there is a sustainable system in place.

We have some exciting plans and more news to come so stay tuned!

If you would like to volunteer to help out in the garden, or assist with the Green Team please email info@fspandc.org.au

Helping Hands

Thanks to those who volunteered to get the Blackboard Cafe started again these past two weeks, it was appreciated by students, teachers and parents!

We are still looking for more volunteers for the Blackboard Cafe and the Kitchen Garden Program. We need help with the cafe on Friday mornings, whether it's before school or after dropping kids and helping with the clean up - it's greatly appreciated.

The Kitchen Garden program has been running on Mondays and they really need a few helpers in the kitchen AND the garden. If you are available for either kitchen or garden on Mondays it would be great. There are 3 classes on Mondays so any of those time slots that suit you would be amazing.

We have had many people attending the volunteer induction sessions and hope to meet you all while volunteering.

If you would like to be kept up to date with upcoming volunteer opportunities, please email your details to info@fspandc.org.au and we can add you to our mailing list.

Save the date

Next P&C Meeting: Monday 16th May at 6:30pm



Fundraising

The Fundraising Committee met last week to plan some exciting activities for the year. We will share a calendar of events with the community shortly, along with our fundraising goals for the year.

Mother's Day Stall

The Faulconbridge Public School P&C Mother's Day Stall will be held on **Thursday 5th May**. Gifts are \$5 each (\$5.50 each if paying online to cover PayPal fees). Look out for the note coming home with your child this week.

We would also be appreciative of any volunteers that can help at the Mother's Day Stall. Last year we had a few Dads come along to help which was fantastic. Dads are encouraged so that the gifts remain a surprise for Mums but we would love any help we can get! To help out, simply return the bottom of the Mother's Day note or email fundraising@fspandc.org.au

Mother's Day Breakfast

Our annual Mother's Day breakfast will be held on **Friday 6th May**. We warmly invite all mothers, grandmothers, carers and special women in our children's lives to come and enjoy a special Mother's Day breakfast at the Blackboard Cafe.



Gateway Family Services

Term 2, 2022

Parenting Programs Summary



Program	Date & Time	Location	To Register
<p>Bringing Up Great Kids In the First 1,000 Days</p> <p><i>Learn more about how babies' brain development influences their thoughts, feelings and tune in to your baby's social, emotional, physical and cognitive development.</i></p> <p><i>Suitable for parents of 0 –2 year olds.</i></p>	<p>Every Monday 2nd May - 6th June 7:00pm - 9:00pm <i>* NO Childcare</i></p>	<p>Blaxland Uniting Church (rear Hall) 70-76 Old Bathurst Road, BLAXLAND</p>	<p>Phone Gateway- 0490 662 498 or email: groups@gatewayfamilyservices.org.au</p>
<p>Circle of Security</p> <p><i>Learn how to be a strong, wiser & kinder parent with your kids.</i></p> <p><i>Suitable for parents of 0 -12 year olds.</i></p>	<p>Every Wednesday 4th May - 15th June 9:30am - 11:30am <i>* NO Childcare</i></p>	<p>Katoomba Public School Merriwa Street, KATOOMBA</p>	<p>Phone Gateway- 0490 662 498 or email: groups@gatewayfamilyservices.org.au</p>
<p>1-2-3 Magic & Emotion Coaching</p> <p><i>Learn how to understand & manage your child's difficult behaviour.</i></p> <p><i>Suitable for parents of 2 -12 year olds.</i></p>	<p>Every Thursday 5th May - 19th May & 9th June 10:00am - 12:00pm <i>* Childcare is available</i></p>	<p>Gateway Family Services - Penrith Office Cnr Station & Henry Sts, PENRITH</p>	<p>Phone Gateway- 0490 662 498 or email: groups@gatewayfamilyservices.org.au</p>
<p>No Scaredy Cats</p> <p><i>Strategies to help your child reduce anxiety & build resilience.</i></p> <p><i>This group will assist you to understand how anxiety develops and how to offset its progress whilst providing some strategies for its management.</i></p> <p><i>Suitable for parents of 2-12 year olds.</i></p>	<p>Every Tuesday 24th May - 7th June 9:30am - 11:30am <i>* NO Childcare</i></p>	<p>WinCAMP 56 White Cross Road, WINMALEE</p>	<p>Phone Gateway- 0490 662 498 or email: groups@gatewayfamilyservices.org.au</p>
<p>Bringing Up Great Kids: PARENTING ADOLESCENTS</p> <p><i>Learn about brain development in adolescents and what influences their thoughts, feelings & behaviour whilst identifying important messages and how to convey to your adolescent.</i></p> <p><i>Suitable for parents of 10-19 yr olds.</i></p>	<p>Every Saturday 30th Apr - 4th June 10:00am - 12noon <i>* NO Childcare</i></p>	<p>Gateway Family Services - Penrith Office Cnr Station & Henry Sts, PENRITH</p>	<p>Phone Gateway- 0490 662 498 or email: groups@gatewayfamilyservices.org.au</p>

For more information and Individual Flyers go to:

www.gatewayfamilyservices.org.au or www.facebook.com/GatewayFS

Gateway Family Services parenting programs are funded by DSS and DCJ.

Gateway works collaboratively with community partners to bring parenting programs to communities from St Marys to Blackheath.

Gateway encourages, supports & respects diversity in families & communities. Our Groups are open to everyone.



SICK OF LOSING LUNCHBOXES AND CLOTHING?

FAULCONBRIDGE PS P&C HAVE PARTNERED WITH MYNAMELABEL.COM.AU TO OFFER FPS FAMILIES A 5% DISCOUNT ON ALL ORDERS.

Plus 15% of every sale will go towards FPS P&C School Fundraising!

Simply use code [FPS0515](#) when you order online at myname-label.com.au



Carers, Kin and Co

A supported playgroup for all (Kinship carers especially welcomed)

Are you a grandparent carer or kinship carer? Would you like to go to a supported play group where you can meet other families in similar situations? This playgroup is for everyone but we especially encourage families with diverse caring roles.

WHEN: The first Monday of the month during school term.

TIME: 10:00am-11:30am

WHERE: Heatherbrae
1 Benang St, Lawson

Contact Imelda 4751 3033 for more information

First group
Monday
May 2nd

Nutrition Snippet

PEAR AND YOGHURT CAKE



Ingredients

- 1 egg
- 125gm margarine
- ½ cup raw sugar
- ¾ cup natural Greek yoghurt
- 1 tbsp vanilla essence
- ½ cup reduced-fat milk
- 1 cup self-raising flour
- ½ cup wholemeal self-raising flour
- ½ cup desiccated coconut
- 1 400g tin pear slices in natural juice, drained

Method

Preheat the oven to 180°C. Grease and line a 20cm x 20cm square baking tin.

Place the first six ingredients into the bowl of a food processor, blender or stand mixer and mix until combined. Add the flours and coconut and mix until just combined. Dice half of the pear slices, add to the batter and mix through.

Spoon into the baking tin. Arrange the remaining pear slices on top to decorate. Bake for 25 minutes until golden and cake bounces back when touched. Allow to cool and then slice.



Part-Time Work Available

Become a School Crossing Supervisor with Transport for NSW!

Multiple Part Time positions across the Parramatta / Western Suburbs - 51380

- Keep our kids, parents, and teachers safe on the road
 - Be a second pair of eyes for our local motorists
- Earn an income and still have time to live your life to the fullest

School crossings require coverage for **20 hours per fortnight** Monday to Friday during the school term.

This involves 1 hour in the morning and 1 hour in the afternoon between 8:00 – 9:30am & 2:30 – 4:00pm.

VACANCIES AVAILABLE:

- Part Time - Schofields Public School
- Casual - Penrith Local Government Area

Scan the QR Code for more information!

Does this sound like you?

- ✓ Reliable in good or bad weather
- ✓ Good communication skills
- ✓ Community spirit
- ✓ Positive energy

If it does, scan the QR code or visit jobs.transport.nsw.gov.au to apply today.

**if you are unable to join us on a part time basis, please consider joining us as a casual!*

For late applications or more information, please contact **Caitlin Ritchie:**

E: Caitlin.ritchie@transport.nsw.gov.au

P: 02 9983 2782

Applications close: Sunday 27th March 2022





SWOT

SPRINGWOOD WORLD OF TENNIS

Andrew McLeod

Accredited Club Professional NSW TCA
Coach

Previously coached in USA and Germany
Qualified PDHPE Teacher

GROUP & PRIVATE LESSONS

ALL AGES - beginners to elite players

SCHOOL HOLIDAY COACHING CLINICS

PRO SHOP, RACQUET SALES & RESTRINGING

Phone: 4751 5383

Mobile: 0416 083 472

Email: springwoodworldoftennis@hotmail.com

SPRING ST, SPRINGWOOD



RAISING KIN
grandparents relatives
and kinship carers

Raising Kin is a support group for grandparents, relatives and kinship carers who care for a child who is a relative. This group meets on the first Wednesday of the month during school term.

TERM 1 2022 DATES:
Wednesdays
FEB 2 MARCH 2 APRIL 6

10:00AM-12:00PM

VENUE:
FAULCONBRIDGE COMMUNITY HALL
9-9A HOME STREET
FAULCONBRIDGE

For more information or to RSVP
please contact
Jenny on 0450 001 393

Striving for a community that is vibrant, caring and inclusive

Springwood Neighbourhood Centre
www.sncc.org.au
reception@sncc.org.au
02 4751 3033
facebook.com/springwoodneighbourhoodcentre



SWOT

SPRINGWOOD WORLD OF TENNIS

SCHOOL HOLIDAY TENNIS COACHING CLINIC

SPRINGWOOD WORLD OF TENNIS, SPRING STREET, SPRINGWOOD

Mon 11th to Thurs 14th April 2022 (9AM to 3PM)

JUNIORS 5YRS TO 16YRS. BEGINNERS TO ADVANCED. FULL SUPERVISION.

FOR FURTHER DETAILS PLEASE RING 4751 5383 OR 0416 083 472.

STUDENTS GRADED INTO GROUPS DEPENDING ON AGE AND ABILITY. COACHING HELD WET OR FINE, RACQUETS AVAILABLE FOR HIRE. LUNCH PROVIDED ON FRIDAY IN CONJUNCTION WITH PRIZE GIVING.

ENTRANCE FEE: \$140 (INC. GST)

BOOK EARLY TO AVOID DISAPPOINTMENT

FUN! GREAT TROPHIES! PRIZES! COMPETITIONS! TOURNAMENTS!

NAME: _____ EMAIL: _____

ADDRESS: _____ AGE: _____

PHONE: _____ (please enclose \$140 fee with this form)

PARENTS SIGNATURE: _____

ENROLMENTS MAY BE MADE AT THE PRO SHOP, SPRING ST, SPRINGWOOD OR BY POSTING THIS FORM TO:-

18-32 Spring St, Springwood NSW 2777 WITH CHEQUE PAYABLE TO SPRINGWOOD WORLD OF TENNIS.